



## Pinch Valve - Two Way - Normally Open & Normally Closed



- Specification & Dimensions: **Page 2**
- Installation Procedures: **Page 3**

## Pinch Valve - Two Way - Normally Open & Normally Closed

### General Features

- Two Way Normally Closed & Normally Open
- Media is completely separated from device
- Aluminium body, stainless steel moving parts
- Sealing: Polyamide
- Tube diameters: 6, 7, 8, 9mm O.D.
- Tube stiffness: max. 55 shore A
- 24VDC 20W, 220VAC 20W

### Applications

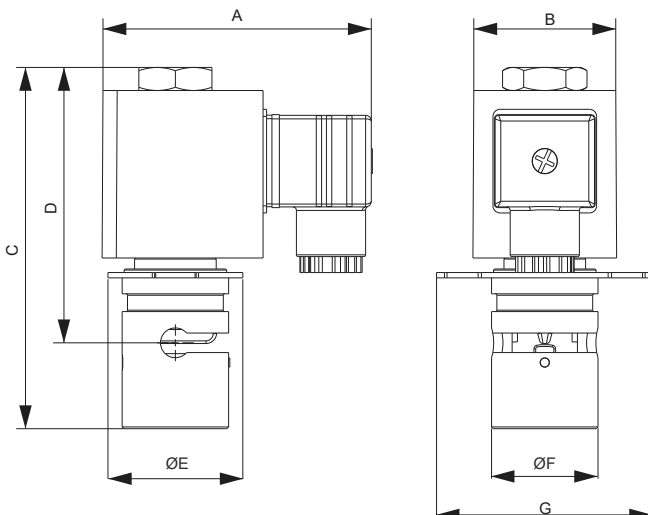
- Dialysis Machines
- Pharmaceutical Industry
- Medical Laboratories
- Food Industry
- Bio-reactors
- Blood Transfusion Units
- Tissue Transplantation Units



### Order Codes

Product Type	Body Material	Tubing O.D. mm		Valve Position		Coil Diameter		Configuration	Version
P	A	06	6.0mm	N	Normally Closed	X	16mm AC	Regular	V0
		07	7.0mm	Z	Normally Open	Y	16mm DC	C1	Version 1
		08	8.0mm					C2	Version 2
		09	9.0mm					C3	Version 3

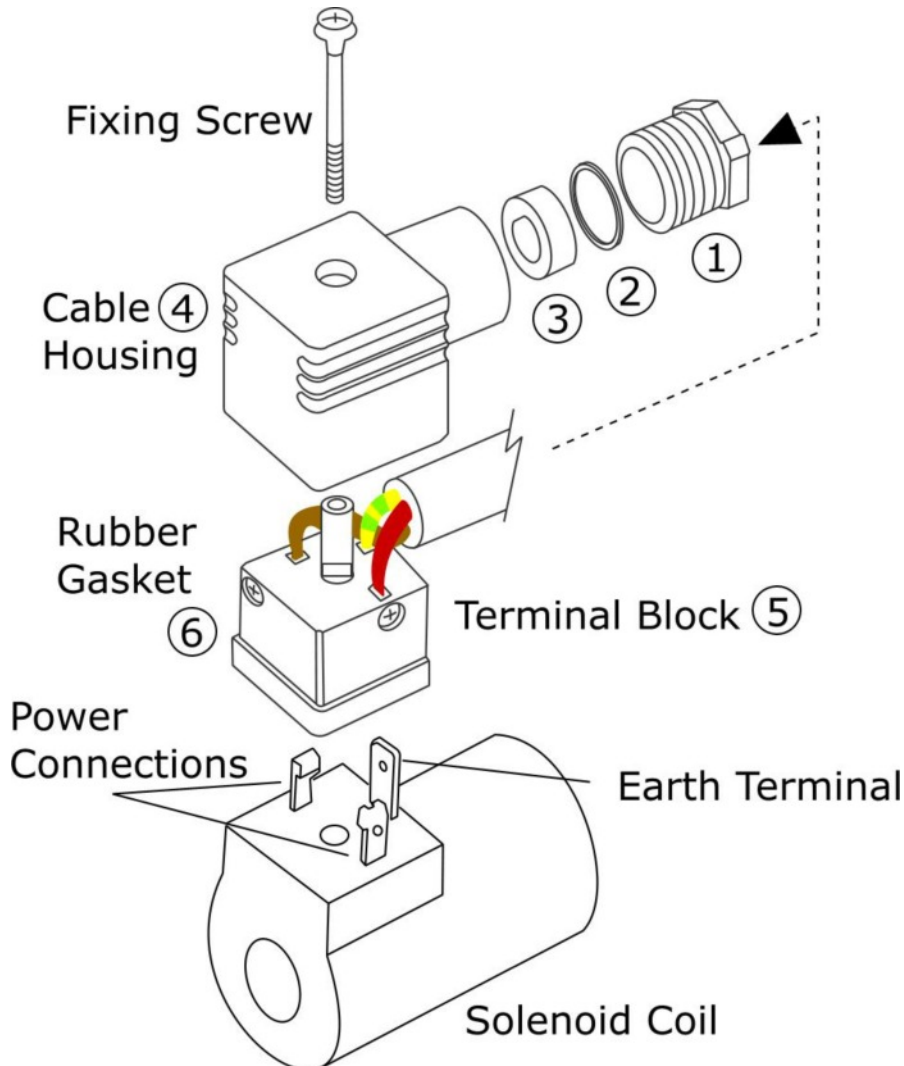
### Dimensions



Model	Dimensions mm (approx.)						
	A	B	C	D	ØE	ØF	F
PA08NYV0	76	40	102	78	38	30	61
PA08ZYV0	76	40	102	88	38	30	61

## Solenoid Valve Wiring - IP65 DIN Connector

### IP65 DIN Connector



### Section 1: DIN Connector Assembly

- Insert the electrical power cable through the gland assembly (1,2,3)
- Push the cable through cable housing (4)
- Connect power and earth cables to terminal block 5
- Push terminal block (5) backwards, inside cable housing (4)
- Place rubber gasket (6) on terminal block (5) front face
- Push terminal block onto solenoid coil terminals
- Push fixing screw through complete assembly
- Tighten fixing screw with small screwdriver
- Do not over tighten
- Tighten cable gland (1,2,3) by hand