

### Solenoid Valve - 2/2 - Normally Open - WRAS Approved

#### Benefits & Features

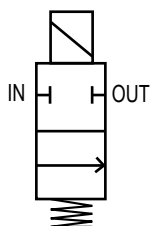
- Two way normally open pilot diaphragm
- WRAS approved certificate: 2007001
- Forged brass body
- Compact design
- IP65



#### Specification

<b>Configuration</b>	Pilot diaphragm
<b>Port Sizes</b>	3/8" to 1" BSP
<b>Orifice</b>	see table below
<b>Kv</b>	see table below
<b>Body</b>	PTFE
<b>Media</b>	Potable Water
<b>Pressure ranges</b>	0.35 - 12bar (3/8" & 1/2"), 0.35 - 10bar (3/4" & 1")
<b>Seals</b>	PTFE -5 to +80°C

#### Configuration



In: IN  
 Out: OUT  
 Coil de-energised: IN to OUT  
 Coil energised: IN & OUT Closed

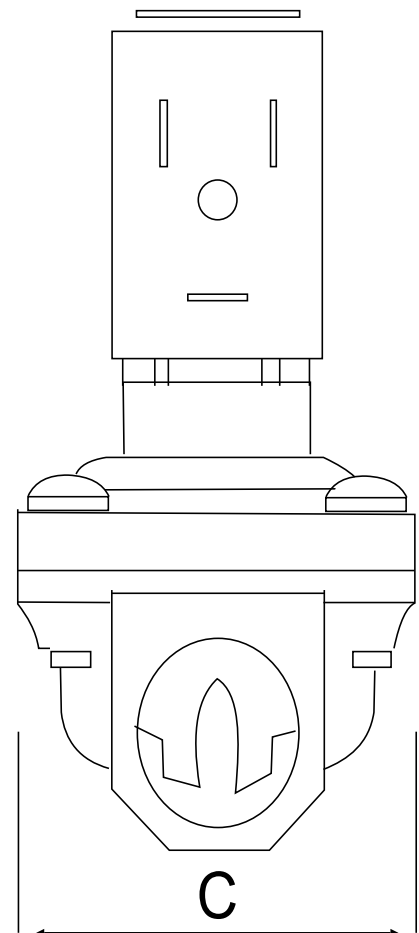
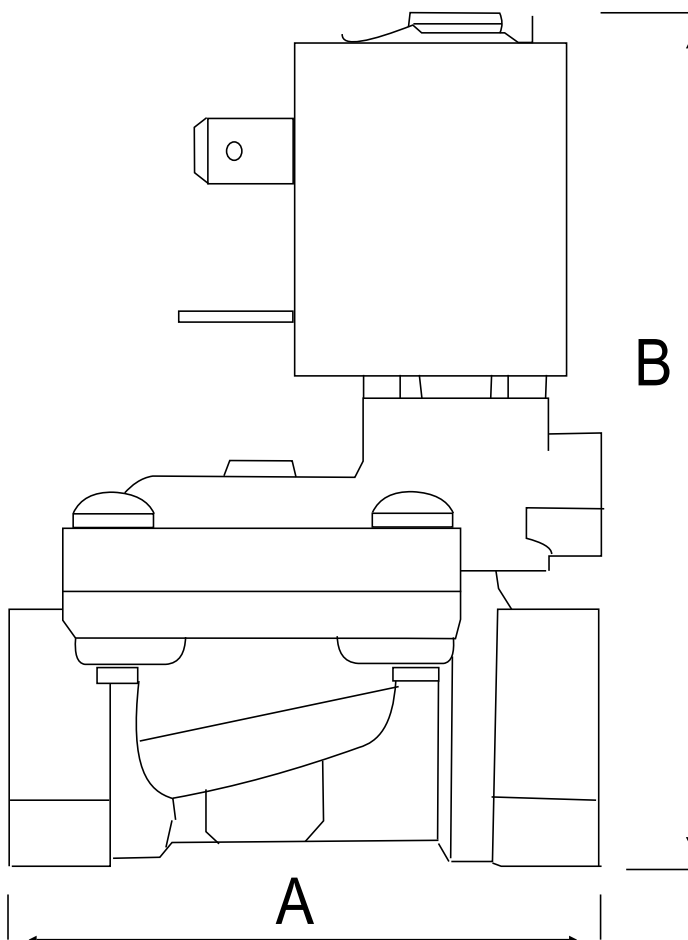
#### Technical Data

Model						Orifice mm	Body Rating	Min . /Max. Operating Differential Pressures. BAR.			KV Flow Factor M3/Hr.
								Min.	Maximum		
									AC	DC	
SXL282.			10			13.5	25	0.35	12	12	2.5
SXL282.			15			13.5	25	0.35	12	12	3.8
SXL282.			20			18	25	0.35	10	10	5
SXL282.			25			24	25	0.35	10	10	12



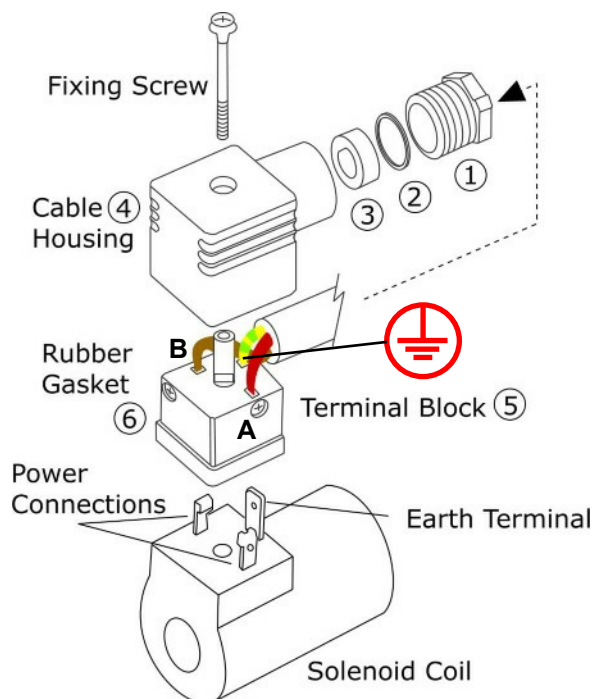
## Weights & Dimensions

Port Size	Weight Kg	Dimensions mm		
		A	B	C
3/8"	0.32	60	77	40
1/2"	0.38	66	82	40
3/4"	0.52	79	89	50
1"	1.08	105	106	71



# PRIORITY DEMAND SOLENOID VALVES INSTALLATION & MAINTENANCE INSTRUCTIONS

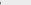
Priority Demand Solenoid Valves should always be installed by a qualified electrician and engineer



## Section 1: DIN Connector Assembly

- Insert the electrical power cable through the gland assembly (1,2,3)
- Push the cable through cable housing (4)
- Connect power and earth cables to terminal block (5)
- Push terminal block (5) backwards, inside cable housing (4)
- Place rubber gasket (6) on terminal block (5) front face
- Push terminal block onto solenoid coil terminals
- Push fixing screw through complete assembly
- Tighten fixing screw with small screwdriver
- Do not over tighten
- Tighten the cable gland (1,2,3) by hand

Note:

The device is not polarity sensitive. The live or neutral can be fitted in either terminal 'A', 'B', '1' or '2' of Terminal Block '5'. The earth wire **MUST** be fitted in the terminal block '5' with the identification 



## Section 2: How to install Priority Demand Solenoid Valves

Solenoid Valves can normally be installed and operate in any orientation. However, we recommend that the Priority demand valves are installed in the horizontal plain with the solenoid coil uppermost. Contact us for further information.

### Installation Procedure:

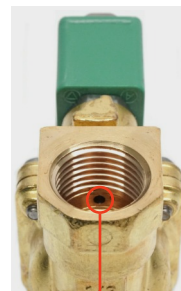
Check that the Solenoid Valve is the correct product ordered for the application, such as port size, normally closed or normally open function. Contact us for further information:

- Isolate the site electrical power supply
- Isolate the site water supply. Leave until cool/safe.
- Insert the valve onto the pipe, ensuring that the flow direction is observed.....IN for incoming media, or an arrow stamped on the valve body.
- Ensure that the pipe connections are free from burrs or loose pipe thread tape
- Ensure that the pilot hole is not blocked by thread tape or sealant in the outlet port (see pic. 1)
- Tighten all pipe joints
- Connect electrical power supply via DIN electrical socket connector, as detailed in section 1

### Section 3: Maintenance Procedure for Solenoid Valves

In the unlikely event of a valve malfunction, or routine maintenance, follow these instructions:

- Isolate the site electrical power supply
- Isolate the site water supply
- Remove the solenoid coil by easing the spring clip with a screwdriver, careful to prevent loss
- Remove the coil tube stem by unscrewing anti-clockwise
- Carefully remove the plunger assembly (inside the coil stem)
- Check the plunger assembly for damage or worn seals
- Check the face inside the coil stem for foreign particles that could prevent correct operation
- Remove the top cover housing and check the diaphragm for damage and blocked transfer port
- Re-assemble the valve in reverse order, ensuring that all parts are cleaned and assembled correctly



Pic. 1  
Pilot Hole  
Outlet Port